

# Datasheet

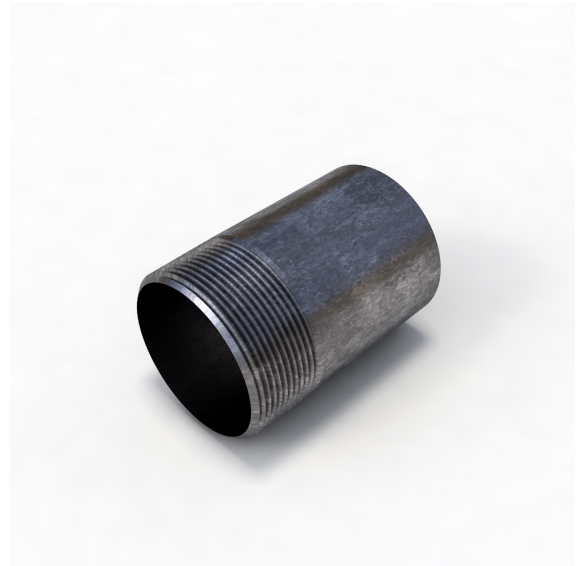
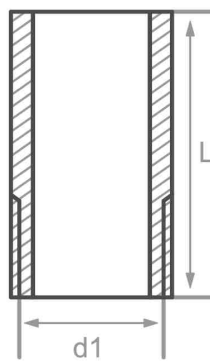
## Description

Welding nipple, EN10241, TAB 22,  
conical thread, S235W, cert. 2.2

## Main data

2" x 50 mm

d1	2"
L	50 mm



## Chemical analysis (heat) in % of mass

(one content=max. value)

Short name: S235W

Mat. grade: 1.0037

C	Si	Mn	P	S	Cr	Cu	Mo	Nb	Ni	Ti	V	Others
0.17		1.40	0.045	0.045								N

## Mechanical properties

Short name: S235W

Mat. grade: 1.0037

Upper yield strength reH or Rp0.2 min for wallthicknesses T in mm, N/mm2 at room temperature		Tensile strength Rm for wallthickn. T in mm, N/mm2 at room temperature		Elongation A at room- temperature, min.%		Min. impact energy KV in J	
T<=16	16<T<=60	T<=16	16<T<=60	Longit.	Transv.	Longit.	Transv.
235	225	360-500	360-500	25	25		

Sources: EN 10253, DIN 17175, DIN 2528, DIN 1629, Stahlschlüssel, ASTM