

Datasheet

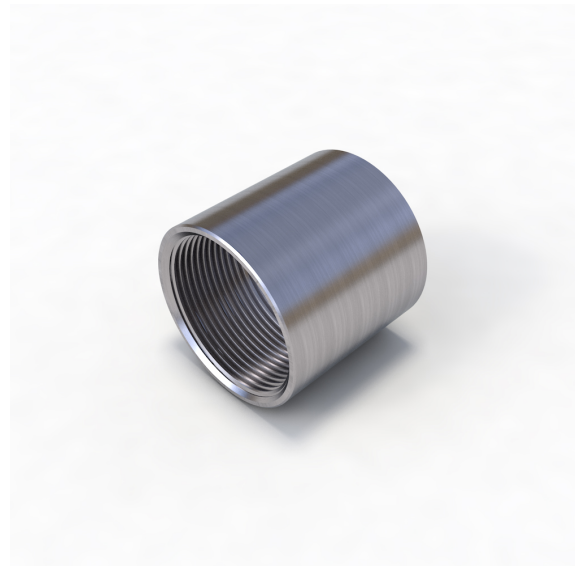
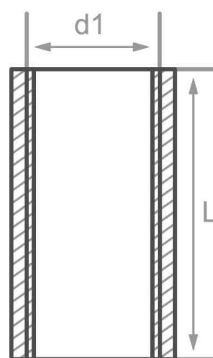
Description

Couplings, EN10241, TAB 12, thread
EN10226, bevelled, S235Wgalv, WZ 2.2

Main data

1 1/2" x 48 mm

d1	1 1/2"
L	48 mm



Chemical analysis (heat) in % of mass

(one content=max. value)

Short name: S235Wgalv

Mat. grade: 1.0037

C	Si	Mn	P	S	Cr	Cu	Mo	Nb	Ni	Ti	V	Others
0.17		1.4	0.045	0.045								N

Mechanical properties

Short name: S235Wgalv

Mat. grade: 1.0037

Upper yield strength reH or Rp0.2 min for wallthicknesses T in mm, N/mm2 at room temperature		Tensile strength Rm for wallthickn. T in mm, N/mm2 at room temperature		Elongation A at room- temperature, min.%		Min. impact energy KV in J	
T<=16	16<T<=60	T<=16	16<T<=60	Longit.	Transv.	Longit.	Transv.
235	225	360-500	360-500	25	25		

Sources: EN 10253, DIN 17175, DIN 2528, DIN 1629, Stahlschlüssel, ASTM