

Datasheet

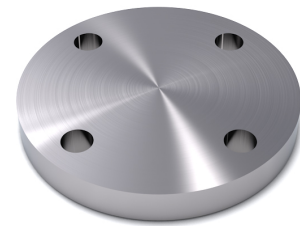
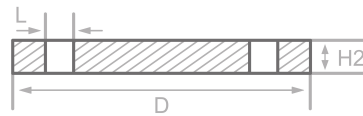
Description

Blindfl., DIN2527-B/EN1092-1-05-A
PN6, P250GH, certificate 3.1

Main data

DN 80

D	190.00 mm
H2	16.00 mm
L	4 x 18.00 mm



Chemical analysis (heat) in % of mass

(one content=max. value)

Short name: P250GH

Mat. grade: 1.0460

C	Si	Mn	P	S	Cr	Cu	Mo	Nb	Ni	Ti	V	Others
0.23	0.40	0.90	0.025	0.015	0.30	0.30	0.08	0.02	0.30	0.03	0.02	Al

Mechanical properties

Short name: P250GH

Mat. grade: 1.0460

Upper yield strength reH or Rp0.2 min for wallthicknesses T in mm, N/mm2 at room temperature		Tensile strength Rm for wallthickn. T in mm, N/mm2 at room temperature		Elongation A at room- temperature, min.%		Min. impact energy KV in J	
T<=16	16<T<=60	T<=16	16<T<=60	Longit.	Transv.	Longit.	Transv.
240	240	410-540	410-540	25		44	

Sources: EN 10253, DIN 17175, DIN 2528, DIN 1629, Stahlschlüssel, ASTM

