

# Datasheet

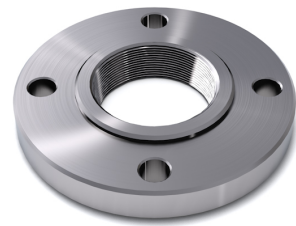
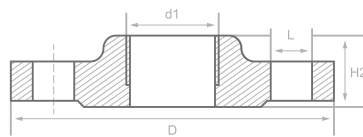
## Description

Threaded Fl., EN1092-1-13-B1, PN 100, P250GHgalv, certificate 3.1

## Main data

DN 32/ 1.25"

d1	1 1/4"
D	140.00 mm
H2	32.00 mm
L	4 x 18.00 mm



## Chemical analysis (heat) in % of mass

(one content=max. value)

Short name: P250GHgalv

Mat. grade: 1.0460

C	Si	Mn	P	S	Cr	Cu	Mo	Nb	Ni	Ti	V	Others
0.23	0.40	0.90	0.025	0.015	0.30	0.30	0.08	0.02	0.30	0.03	0.02	Al

## Mechanical properties

Short name: P250GHgalv

Mat. grade: 1.0460

Upper yield strength reH or Rp0.2 min for wallthicknesses T in mm, N/mm2 at room temperature		Tensile strength Rm for wallthickn. T in mm, N/mm2 at room temperature		Elongation A at room- temperature, min.%		Min. impact energy KV in J	
T<=16	16<T<=60	T<=16	16<T<=60	Longit.	Transv.	Longit.	Transv.
240	240	410-540	410-540	25		44	

Sources: EN 10253, DIN 17175, DIN 2528, DIN 1629, Stahlschlüssel, ASTM

