

Datasheet

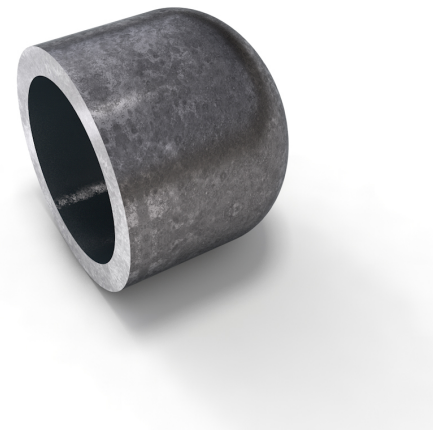
Description

Caps, DIN2617/EN10253-2
P265GH, certificate 3.1

Main data

42.40 x 2.60 mm

d1	42.40 mm
S	2.60 mm
h	38.00 mm



Chemical analysis (heat) in % of mass

(one content=max. value)

Short name: P265GH

Mat. grade: 1.0425

C	Si	Mn	P	S	Cr	Cu	Mo	Nb	Ni	Ti	V	Others
0.20	0.40	1.40	0.025	0.020	0.30	0.30	0.08	0.01	0.30	0.04	0.02	Al

Mechanical properties

Short name: P265GH

Mat. grade: 1.0425

Upper yield strength reH or Rp0.2 min for wallthicknesses T in mm, N/mm2 at room temperature		Tensile strength Rm for wallthickn. T in mm, N/mm2 at room temperature		Elongation A at room- temperature, min.%		Min. impact energy KV in J	
T<=16	16<T<=60	T<=16	16<T<=60	Longit.	Transv.	Longit.	Transv.
265	255	410-570	410-570	23	21	40	27

Sources: EN 10253, DIN 17175, DIN 2528, DIN 1629, Stahlschlüssel, ASTM