

# Datasheet

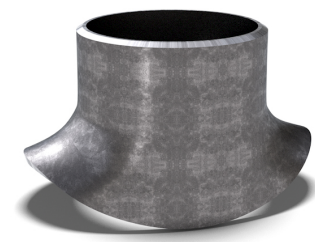
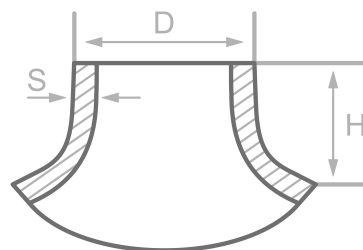
## Description

Saddle DIN 2618, ST37.0

## Main data

323.90 x 7.10 mm

D	323.90 mm
S	7.10 mm
H	175.00 mm



## Chemical analysis (heat) in % of mass

(one content=max. value)

Short name: ST37.0

Mat. grade: 1.0254

C	Si	Mn	P	S	Cr	Cu	Mo	Nb	Ni	Ti	V	Others
0.16	0.35	1.20	0.025	0.020	0.30	0.30	0.08	0.01	0.30	0.04	0.02	

## Mechanical properties

Short name: ST37.0

Mat. grade: 1.0254

Upper yield strength reH or Rp0.2 min for wallthicknesses T in mm, N/mm <sup>2</sup> at room temperature		Tensile strength Rm for wallthickn. T in mm, N/mm <sup>2</sup> at room temperature		Elongation A at room- temperature, min.%		Min. impact energy KV in J	
T ≤ 16	16 < T ≤ 60	T ≤ 16	16 < T ≤ 60	Longit.	Transv.	Longit.	Transv.
235	225	350-480	350-480	25	23		

Sources: EN 10253, DIN 17175, DIN 2528, DIN 1629, Stahlschlüssel, ASTM

