

# Datasheet

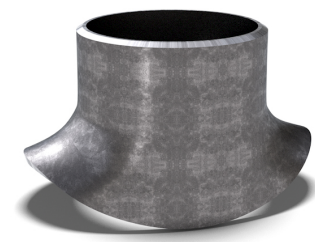
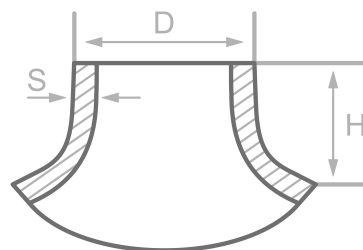
## Description

Saddle, similar DIN2618 short,  
St35.8/I, certificate 3.1

## Main data

139.70 x 8.80 mm

D	139.70 mm
S	8.80 mm
H	85.00 mm



## Chemical analysis (heat) in % of mass

(one content=max. value)

Short name: St35.8/I

Mat. grade: 1.0305

C	Si	Mn	P	S	Cr	Cu	Mo	Nb	Ni	Ti	V	Others
0.17	0.35	0.80	0.040	0.040								

## Mechanical properties

Short name: St35.8/I

Mat. grade: 1.0305

Upper yield strength reH or Rp0.2 min for wallthicknesses T in mm, N/mm <sup>2</sup> at room temperature		Tensile strength Rm for wallthickn. T in mm, N/mm <sup>2</sup> at room temperature		Elongation A at room- temperature, min.%		Min. impact energy KV in J	
T ≤ 16	16 < T ≤ 60	T ≤ 16	16 < T ≤ 60	Longit.	Transv.	Longit.	Transv.
235	225	360-480	360-480	25	23		34

Sources: EN 10253, DIN 17175, DIN 2528, DIN 1629, Stahlschlüssel, ASTM

