

Datasheet

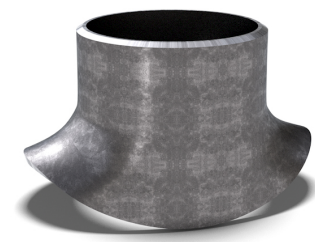
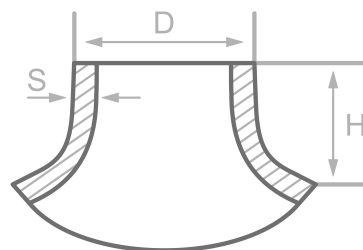
Description

Saddle, similar DIN2618 long,
St35.8/I, certificate 3.1

Main data

168.30 x 4.50 mm

D	168.30 mm
S	4.50 mm
H	170.00 mm



Chemical analysis (heat) in % of mass

(one content=max. value)

Short name: St35.8/I

Mat. grade: 1.0305

C	Si	Mn	P	S	Cr	Cu	Mo	Nb	Ni	Ti	V	Others
0.17	0.35	0.80	0.040	0.040								

Mechanical properties

Short name: St35.8/I

Mat. grade: 1.0305

Upper yield strength reH or Rp0.2 min for wallthicknesses T in mm, N/mm ² at room temperature		Tensile strength Rm for wallthickn. T in mm, N/mm ² at room temperature		Elongation A at room- temperature, min.%		Min. impact energy KV in J	
T<=16	16<T<=60	T<=16	16<T<=60	Longit.	Transv.	Longit.	Transv.
235	225	360-480	360-480	25	23		34

Sources: EN 10253, DIN 17175, DIN 2528, DIN 1629, Stahlschlüssel, ASTM

