

# Datasheet

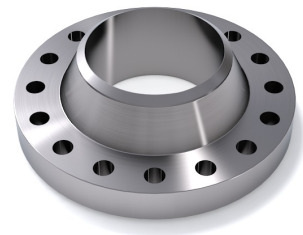
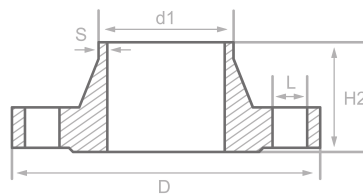
## Description

WN Flange, DIN2637-E/EN1092-1-11-B2  
PN100, P250GH, cert. 3.1

## Main data

DN 350/ 355.60 x 16.00 mm

d1	355.60 mm
S	16.00 mm
D	655.00 mm
H2	189.00 mm
L	16 x 48.00 mm



## Chemical analysis (heat) in % of mass

(one content=max. value)

Short name: P250GH

Mat. grade: 1.0460

C	Si	Mn	P	S	Cr	Cu	Mo	Nb	Ni	Ti	V	Others
0.23	0.40	0.90	0.025	0.015	0.30	0.30	0.08	0.02	0.30	0.03	0.02	Al

## Mechanical properties

Short name: P250GH

Mat. grade: 1.0460

Upper yield strength reH or Rp0.2 min for wallthicknesses T in mm, N/mm2 at room temperature		Tensile strength Rm for wallthickn. T in mm, N/mm2 at room temperature		Elongation A at room- temperature, min.%		Min. impact energy KV in J	
T<=16	16<T<=60	T<=16	16<T<=60	Longit.	Transv.	Longit.	Transv.
240	240	410-540	410-540	25		44	

Sources: EN 10253, DIN 17175, DIN 2528, DIN 1629, Stahlschlüssel, ASTM

