

Datasheet

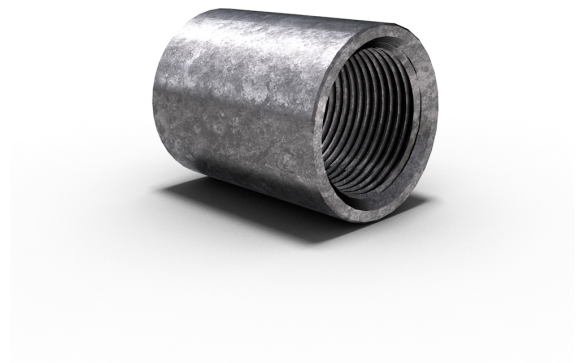
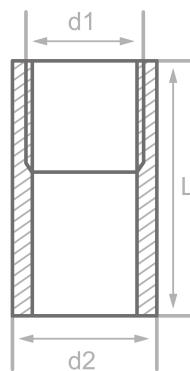
Description

Coupling, DIN86103/B
RST 37-2, cert. (pipe)

Main data

1/2" x 30.00 mm

d1	0.50"
L	30.00 mm
d2	30.00 mm



Chemical analysis (heat) in % of mass

(one content=max. value)

Short name: RST 37-2

Mat. grade: 1.0038

C	Si	Mn	P	S	Cr	Cu	Mo	Nb	Ni	Ti	V	Others
0.17		1.40	0.035	0.035		0.55						N

Mechanical properties

Short name: RST 37-2

Mat. grade: 1.0038

Upper yield strength reH or Rp0.2 min for wallthicknesses T in mm, N/mm2 at room temperature		Tensile strength Rm for wallthickn. T in mm, N/mm2 at room temperature		Elongation A at room- temperature, min.%		Min. impact energy KV in J	
T<=16	16<T<=60	T<=16	16<T<=60	Longit.	Transv.	Longit.	Transv.
235	225	360-510	360-510	24	22		27

Sources: EN 10253, DIN 17175, DIN 2528, DIN 1629, Stahlschlüssel, ASTM