

# Datasheet

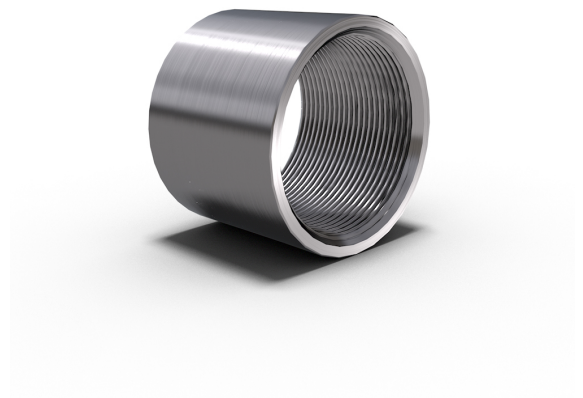
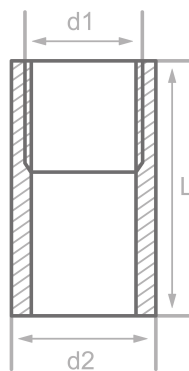
## Description

Coupling, DIN86103/B  
1.4571, cert. 3.1(pipe)

## Main data

1 1/2" x 32.00 mm

d1	1.50"
L	32.00 mm
d2	62.00 mm



## Chemical analysis (heat) in % of mass

(one content=max. value)

Short name: 1.4571

Mat. grade: 1.4571

C	Si	Mn	P	S	Cr	Cu	Mo	Nb	Ni	Ti	V	Others
0.08	1.00	2.00	0.045	0.015	18.5		2.50		13.5	0.70		

## Mechanical properties

Short name: 1.4571

Mat. grade: 1.4571

Upper yield strength reH or Rp0.2 min for wallthicknesses T in mm, N/mm2 at room temperature		Tensile strength Rm for wallthickn. T in mm, N/mm2 at room temperature		Elongation A at room- temperature, min.%		Min. impact energy KV in J	
T<=16	16<T<=60	T<=16	16<T<=60	Longit.	Transv.	Longit.	Transv.
		500-730	500-730	35	30	100	60

Sources: EN 10253, DIN 17175, DIN 2528, DIN 1629, Stahlschlüssel, ASTM